

Operating Manual

Mounting Tools

Overview Mounting Tools

Universal Mounting Tool Small



for NW Normal Profil	for NW AHW	Art.-No.	PU
4,5-7,5	4,5-6	9001511	1

Universal Mounting Tool Big



for NW Normal Profil	for NW AHW	Art.-No.	PU
to 12	to 11	9001543	1
from 12	from 11	9001550	1

Mounting Tool Metal



for NW Normal Profil	for NW AHW	Art.-No.	PU
4,5	4,5	9001524	1
7,5	6	9001527	1
10	8,5	9001530	1
13	11	9001533	1
13S		9001534	1
17	15	9001537	1
22	19	9001542	1
23S		9001545	1
29S		9001544	1

Fiber Optics Tool Metal



for NW	Art.-No.	PU
3	9001539	1

Fiber Optics Tool Metal



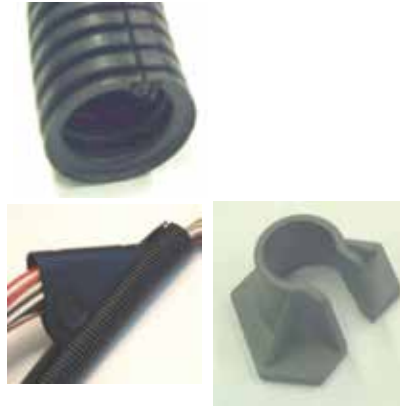
for NW	Art.-No.	PU
3	9001540	1

For selflocking corrugated tubes



for NW	Art.-No.	PU
7,5 L - 10 L	9001525	1

For lockable corrugated tubes



Closing tool =
Universal Mounting tool

Closing tool

for NW	Art.-No. Opening tool	Art.-No. Closing tool	PU
8,5 V	9001543	9001558	1
11 V	9001543	9001561	1
13 V	9001550	9001558	1
15 V	9001550	9001567	1
19 V	9001550	9001555	1
26 V	9001550	9001564	1

Operating Instruction suitable for corrugated tube



for NW Normal Profile	for NW AHW	Art.-No.	PU
4,5	4,5	9001524	1
7,5	6	9001527	1
10	8,5	9001530	1
13	11	9001533	1
13S		9001534	1
17	15	9001537	1
22	19	9001542	1
23S		9001545	1
29S		9001544	1

1 Insert Tool over loose wires.

2 Slide the tool into the slit corrugated tube.

3 Note: The metal tip of the tool must be pushed into the interior part of the corrugated tube.

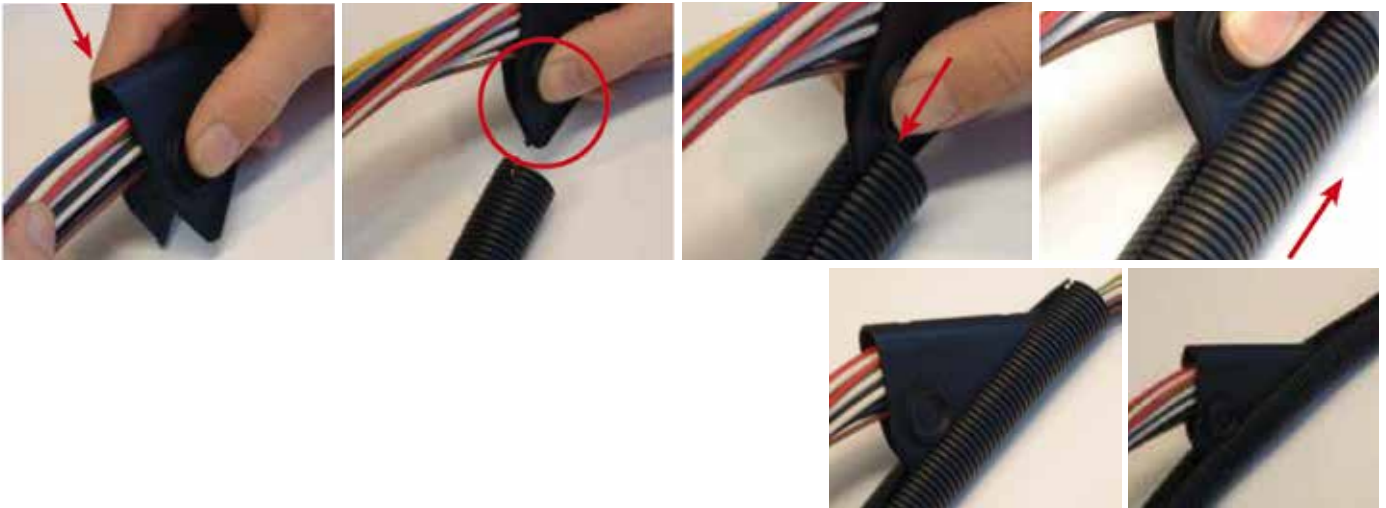


Operating Instruction suitable for corrugated tube



for NW Normal Profil	for NW AHW	Art.-No.	PU
to 12	to 11	9001543	1
from 12	from 11	9001550	1

- 1** Insert Tool over loose wires. **2** Squeeze the tip of the tool together. **3** Slide the tip of the tool into the slit corrugated tube.

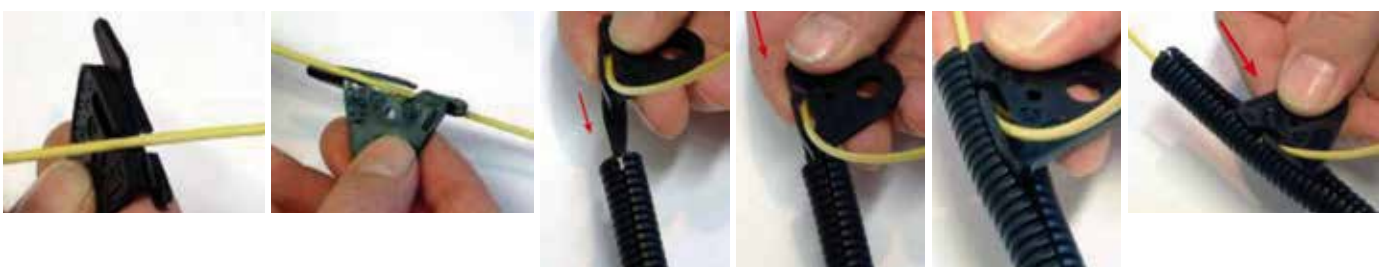


Operating Instruction suitable for corrugated tube



for NW Normal Profil	for NW AHW	Art.-No.	PU
4,5-7,5	4,5-6	9001511	1

- 1** Place wire into the tool. **2** Insert the tip of the tool into the slit corrugated tube.

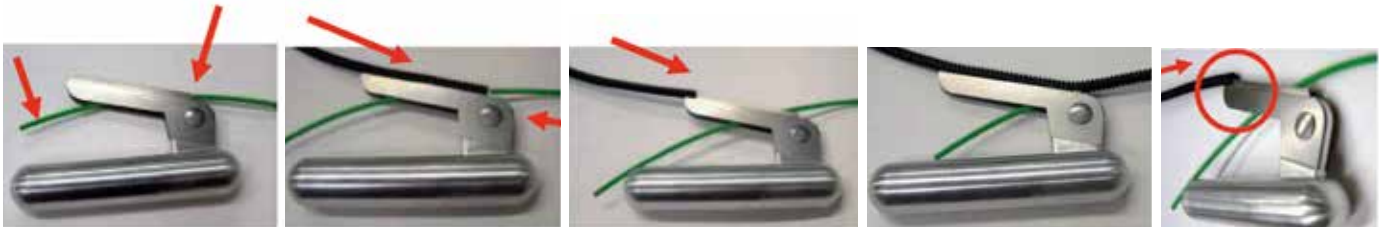


Operating Instruction suitable for slit corrugated tube



for NW Normal Profile	for NW AHW	Art.-No.	PU
3		9001539	1

- 1** Insert Fiber optics into the tool. **2** Insert the tip of the tool into the slit corrugated tube.



Operating Instruction suitable for slit Corrugated tube



for NW Normal Profile	for NW AHW	Art.-No.	PU
7,5 - 10	4,5 - 8,5	9001525	1

- 1** Slide tool over loose wires. **2** Press the tool together lightly and insert into the self locking corrugated tube.



Operating Instruction suitable for lockable Corrugated tube



Closing tool =
Universal Mounting tool



Closing tool

for NW	Art.-No. Opening tool	Art.-No. Closing tool	PU
8,5 V	9001543	9001558	1
11 V	9001543	9001561	1
13 V	9001550	9001558	1
15 V	9001550	9001567	1
19 V	9001550	9001555	1
26 V	9001550	9001564	1

Attention: Operating Instruction for wire assembling see Universal Mounting tool

- 1 Slide Closing tool over the Wires.
- 2 Place front edge of the Closing tool directly on the fastening seam of the corrugated tube.



Front edge of the Closing tool.

Fastening Seam



- 3 Slide Closing tool over the Corrugated tube.



- 4 The Corrugated tube locks itself by being pressed down on one side and at the same time being „hooked“ into the lock mechanism.



- 5 Completely locked Corrugated tube.

The Schlemmer Group is a global technology expert, which has focused on the development and production of industrial solutions, including the area of sensitive electrical installations. Drawing on 60 years of experience in cable protection, the Group has evolved into a leader

and comprehensive value added supplier. In addition to the traditional business segment Automotive, the Schlemmer Group operates in numerous other industries with its business segments Industry and Appliances.

Any questions left?

Visit our website at
www.schlemmer.com
or write us an e-mail at
info@schlemmer.com

